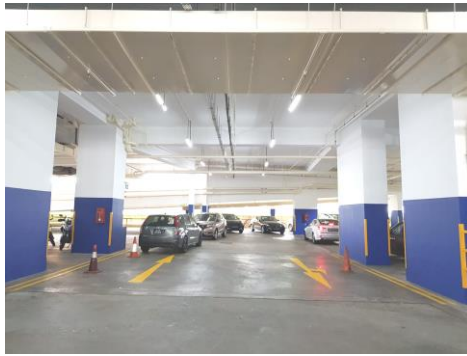


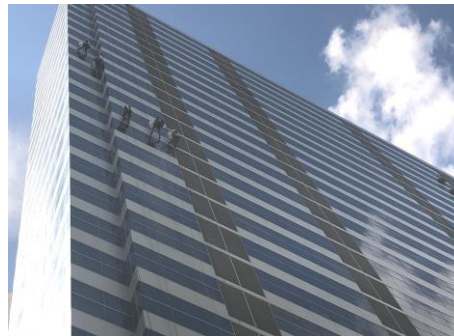
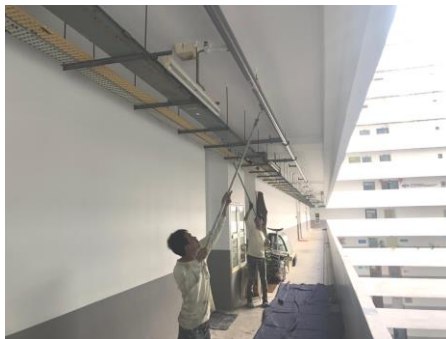
UPDATE ON HAPPENINGS AT WCEGA PLAZA & TOWER

Tower Basement Parking

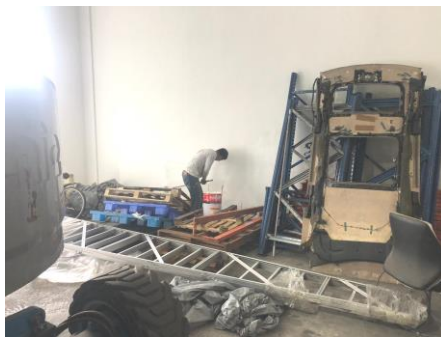


Due to limited parking lots at Tower basement car park, drivers are advised to be more considerate when parking. The management noticed that there are vehicles park in double parking manner or park at double yellow line area where the driveway is narrow, causing a blind spot and pose a danger to oncoming vehicles. The security staff will not hesitate to wheel-clamp such vehicles without further notice. Tower occupants are advised to park their vehicle at Plaza basement if the Tower basement car park is full.

Repair & Redecoration (R & R) Programme



The R&R contractors have started painting works at the corridor from level 29, Wcega Tower. For the facade glass panels, they are doing washing and sealant works from stack 70 to stack 84. Meanwhile, the contractors will start hacking the lift lobbies wall tiles starting from 13 June 2019.



For Wcega Plaza, the contractors have started painting works at the common area from level 9. Please note that progress for Plaza painting works may be slow if there is obstruction at the common area. Therefore, we would like to remind Plaza occupants to keep your trade goods within your unit to prevent any damages or lost.